



6M Push Out Micro Pod – Empty  
\$21,750.00

Compact, clever and convenient — the 6 M Push-Out Micro Pod – Empty expands to approximately 20 m<sup>2</sup> from its folded footprint of ~5.93 m × 2.24 m × 2.36 m. Ready for electricity and plumbing, it's engineered for flexibility: think backyard studio, mobile office, guest cabin or smart storage unit. Built with a galvanized steel frame, double-glazed windows, insulated walls and sliding push-out section for extra space. Ideal for both temporary and permanent use.

### Key Features

- **Spacious Expansion:** Expands to approx. 20 m<sup>2</sup> when deployed, offering plenty of open space for your ideas.
- **Compact Shipping Size:** Ships folded at approx. 5.93 m × 2.24 m × 2.36 m for easy transport.
- **Open Layout:** Full open-plan interior allows flexible use and customisation.
- **Simple Model:** No bathroom, shower, or kitchenette included—ideal for studios, offices, or storage.
- **Durable Construction:** Strong steel-frame structure with insulated panels for long-lasting performance.



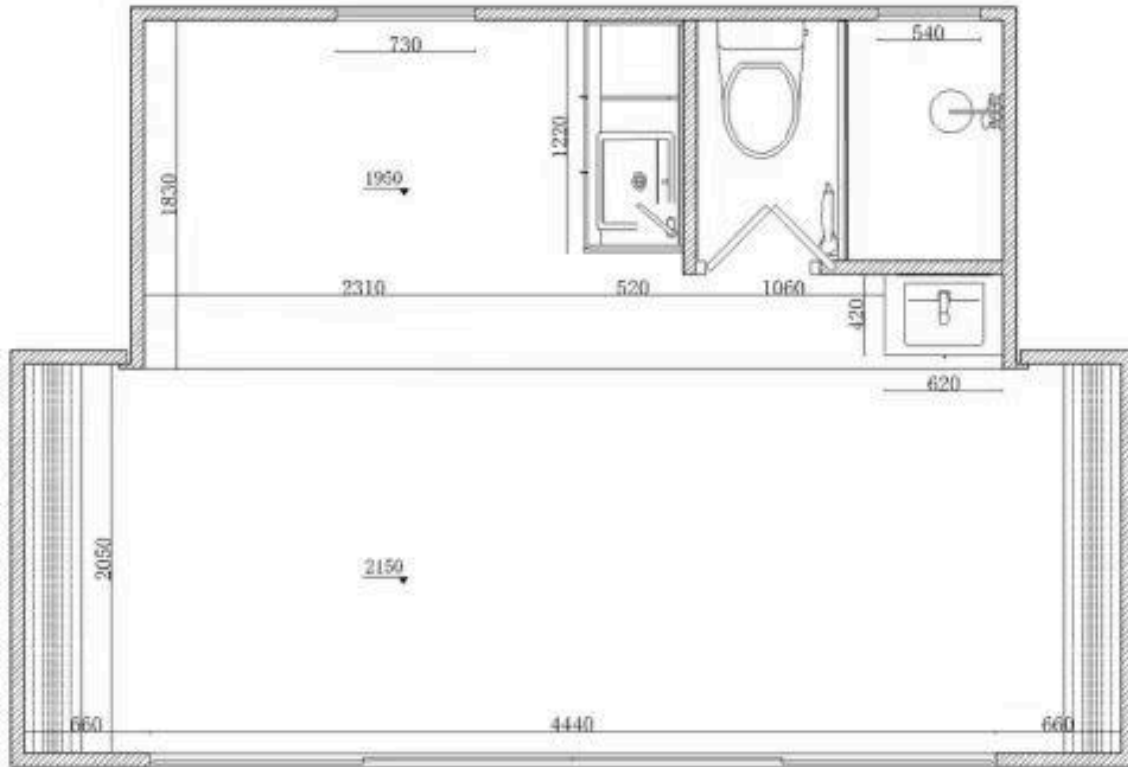
This compact, expandable pod delivers roughly 20 m<sup>2</sup> of usable space and expands from a shipping footprint of approx. 5.93 m × 2.24 m × 2.36 m.

Inside you'll find a spacious open plan style area you can use as an art studio, storage room, or an at home office.

Lightweight (approx. 2,100 kg) and designed for transport, this unit works perfectly for a guest room, backyard retreat, portable office or compact residence.

## Technical Specifications

- **Folded Size:** 5.93 m × 2.24 m × 2.36 m — compact for easy transport.
- **Expanded Size:** 20 m<sup>2</sup> via push-out design — spacious and versatile interior.
- **Weight:** 2,100 kg — robust yet manageable.
- **Frame:** Galvanised steel structure for long-term durability.
- **Walls:** Aluminium-plastic exterior panels with polyurethane insulation for thermal efficiency.
- **Flooring:** 2 mm wear-resistant reinforced PVC — durable and easy to maintain.
- **Windows:** Double-layer insulated tempered glass sliding windows for comfort and light.
- **Doors:** Broken-bridge aluminium alloy doors for energy efficiency and security.
- **Use Cases:** Ideal as a storage room, home office, or creative art studio.



NOTE: The picture above are of another variation but the base measurements for the product are the same. The “Empty” version will not include the bathroom, kitchen, and wash basin!

Each 6M Push-Out Micro Pod – Empty is delivered in its compacted form for efficient transport and minimal site disruption. On-site push out expansion typically takes 6 hours to 1 day. Delivery timeframe is approximately 2–3 months, inclusive of factory build and freight.



## Utilities & Installation

- **Electrical Ready:** Pre-wired for quick on-site connection.
- **Solar Compatible:** Works with off-grid solar systems (system not included).
- **HVAC Flexibility:** Supports split or portable heating/cooling units.
- **Licensed Trades Required:** All installations should be completed by qualified professionals.

## Optional Upgrades

- **Kitchen Cabinet Sets:** Complete with sink and appliances for functional use.
- **Custom Storage:** Built-in wardrobes or storage units to maximise space.
- **Cladding & Finish Options:** Upgrade exterior or interior finishes for a personalised look.

## Warranty & After-Sales Support

- **3-Year Coverage:** External structure and weatherproofing.
- **1-Year Coverage:** Internal fittings and fixtures.
- **Returns Policy:** Returns not accepted after production has started.
- **After-Sales Support:** Full support provided for any manufacturing defects.



### 6M Push Out Micro Pod – With Bathroom & Kitchenette

\$27,000.00

Introducing the 6M Push Out Micro Pod – With Bathroom & Kitchenette, a smartly designed 6 m push-out module that expands to 20 m<sup>2</sup> of usable space. With full plumbing and electricals, kitchenette and bathroom options, it's ideal for guest spaces, studios, portable offices or compact living solutions.

#### Key Features

- **Spacious Expansion:** Expands to approx. 20 m<sup>2</sup> when deployed, offering a comfortable and functional interior.
- **Compact Shipping Size:** Ships folded at approx. 5.93 m × 2.24 m × 2.36 m for easy transport and handling.
- **Fully Equipped Kitchenette:** Includes sink and cabinets for convenient meal prep or workspace.
- **Complete Bathroom:** Features shower, toilet, and vanity for full self-contained functionality.
- **Durable Construction:** Strong steel-frame structure with insulated panels for long-lasting performance.



This compact, expandable pod delivers roughly 20 m<sup>2</sup> of usable space and expands from a shipping footprint of approx. 5.93 m × 2.24 m × 2.36 m.

Inside you'll find a spacious open plan style home with a kitchenette and bathroom (sink, cabinets, shower, toilet, full plumbing and electrical system) for a complete living solution.

Lightweight (approx. 2,100 kg) and designed for transport, this unit works perfectly for a guest room, backyard retreat, portable office or compact residence.

## Technical Specifications

- **Folded Size:** 5.93 m × 2.24 m × 2.36 m — compact for easy transport.
- **Expanded Size:** 20 m<sup>2</sup> via push-out design — spacious and versatile interior.
- **Weight:** 2,100 kg — robust yet manageable.
- **Frame:** Galvanised steel structure for long-lasting durability.
- **Walls:** Aluminium-plastic exterior panels with polyurethane insulation for thermal efficiency.
- **Flooring:** 2 mm wear-resistant reinforced PVC — durable and easy to maintain.
- **Windows:** Double-layer insulated tempered glass sliding windows for comfort and natural light.
- **Doors:** Broken-bridge aluminium alloy doors for energy efficiency and security.
- **Use Cases:** Ideal as a guest room, backyard suite, portable office, cabana, or movable house.



Each 6M Push-Out Micro Pod – With Bathroom & Kitchenette is delivered in its compacted form for efficient transport and minimal site disruption. On-site push out expansion typically takes 6 hours to 1 day. Delivery timeframe is approximately 2–3 months, inclusive of factory build and freight.

## Utilities & Installation

- **Electrical & Water Ready:** Pre-wired and plumbed for fast on-site connection.
- **Solar Compatible:** Designed to work with off-grid solar systems (solar system not included).
- **HVAC Flexibility:** Compatible with split or portable heating/cooling systems.
- **Professional Installation Required:** All connections should be completed by licensed tradespeople.

## Optional Upgrades

- **Kitchen Cabinet Sets:** Includes sink and appliances for functional living or working spaces.
- **Custom Storage:** Built-in wardrobes or storage units to maximize usability.
- **Cladding & Finish Options:** Upgrade exterior or interior finishes for a personalized touch.

## Warranty & After-Sales Support

- **3-Year Coverage:** Protects external structure and weatherproofing.
- **1-Year Coverage:** Covers internal fittings and fixtures.
- **Returns Policy:** Returns are not accepted once production has started.
- **After-Sales Support:** Full support provided for any manufacturing defects.



### 6M Push Out Micro Pod - With Bedroom

\$28,800.00

Introducing the 6M Push Out Micro Pod - With Bedroom, a smartly designed 6 m push-out module that expands to 20 m<sup>2</sup> of usable space. With a built-in bedroom, full plumbing and electrics, kitchenette and bathroom options, it's ideal for guest spaces, studios, portable offices or compact living solutions.



## Key Features

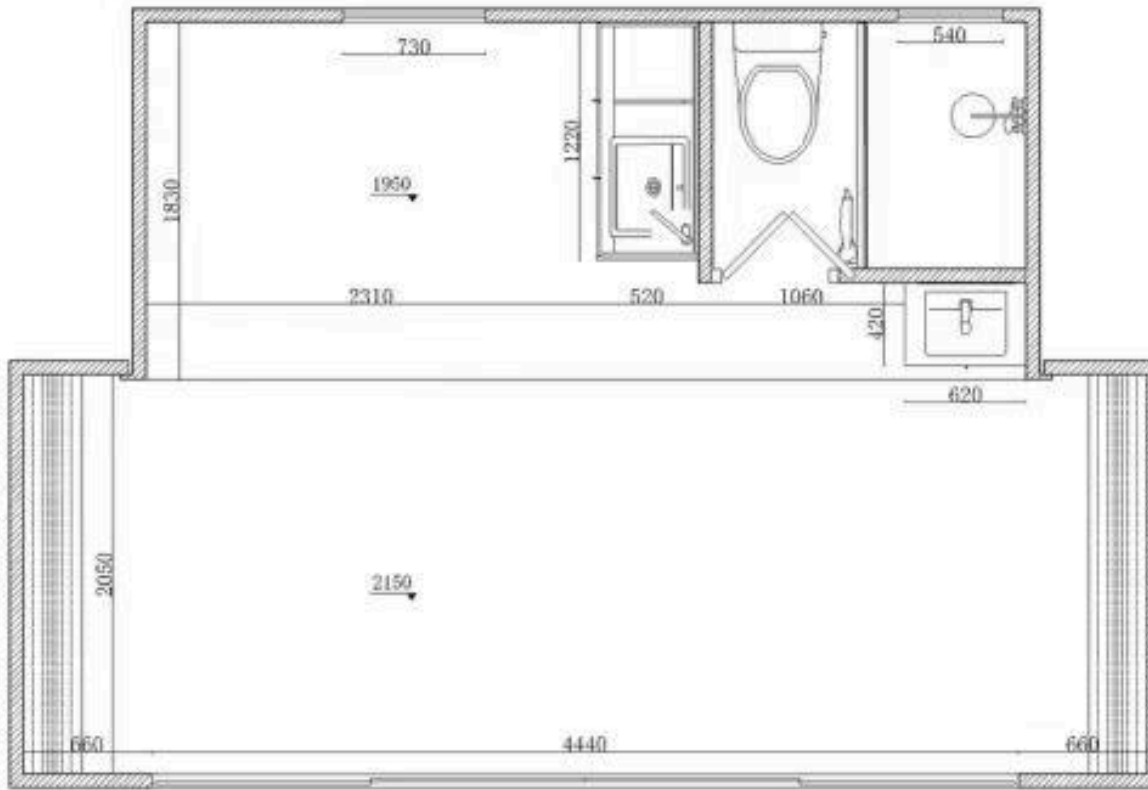
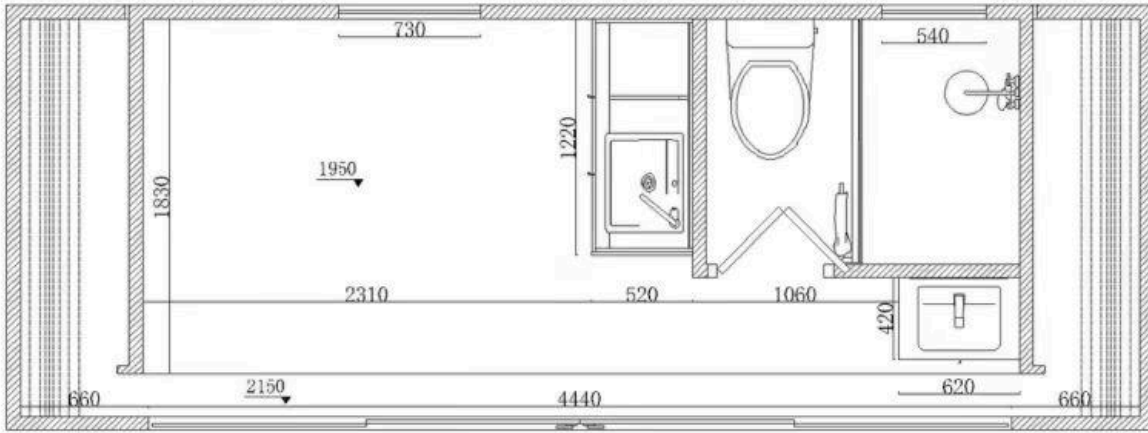
- **Spacious Expansion:** Expands to approx. 20 m<sup>2</sup> when deployed, providing a comfortable and functional interior.
- **Compact Shipping Size:** Ships folded at approx. 5.93 m × 2.24 m × 2.36 m for easy transport.
- **Private Bedroom Area:** Designed for rest, privacy, and personal space.
- **Fully Equipped Kitchenette:** Includes sink and cabinets for convenient meal prep or workspace.
- **Complete Bathroom:** Features shower, toilet, and vanity for self-contained functionality.
- **Durable Construction:** Strong structural frame with insulated panels for long-lasting performance.



This compact, expandable pod delivers roughly 20 m<sup>2</sup> of usable space and expands from a shipping footprint of approx. 5.93 m × 2.24 m × 2.36 m.

Inside you'll find a bedroom, and you have the option to choose a setup with a kitchenette and bathroom (sink, cabinets, shower, toilet, full plumbing and electrical system) for a complete living solution.

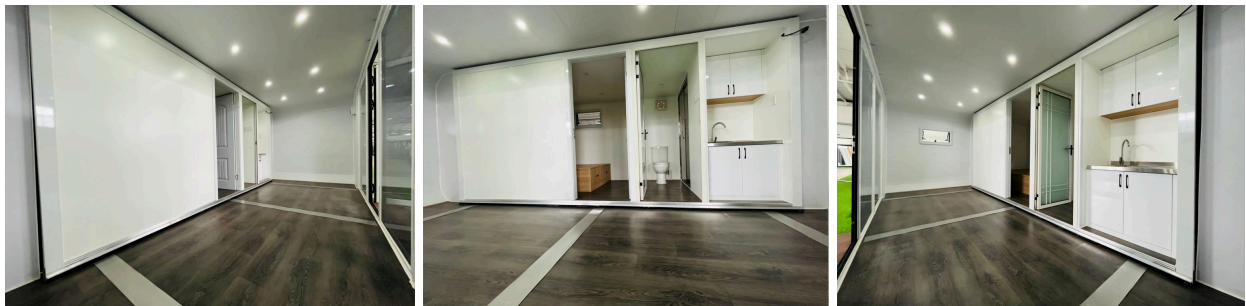
Lightweight (approx. 2,100 kg) and designed for transport, this unit works perfectly for a guest room, backyard retreat, portable office or compact residence.



## Technical Specifications

- **Folded Size:** 5.93 m × 2.24 m × 2.36 m — compact for easy transport.
- **Expanded Size:** 20 m<sup>2</sup> via push-out design — spacious and versatile interior.
- **Weight:** 2,100 kg — robust yet manageable.
- **Frame:** Galvanised steel structure for long-term durability.
- **Walls:** Aluminium-plastic exterior panels with polyurethane insulation for thermal efficiency.
- **Flooring:** 2 mm wear-resistant reinforced PVC — durable and easy to maintain.
- **Windows:** Double-layer insulated tempered glass sliding windows for comfort and natural light.
- **Doors:** Broken-bridge aluminium alloy doors for energy efficiency and security.
- **Use Cases:** Perfect as a guest room, backyard suite, portable office, cabana, or movable house.

Each 6M Push-Out Apple Pod – With Bedroom is delivered in its compacted form for efficient transport and minimal site disruption. On-site push out expansion typically takes 6 hours to 1 day. Delivery timeframe is approximately 2–3 months, inclusive of factory build and freight.



## Utilities & Installation

- **Water & Electrical Ready:** Pre-wired and plumbed for fast on-site connection.
- **Solar Compatible:** Works with off-grid solar systems (solar system not included).
- **HVAC Flexibility:** Compatible with split or portable heating/cooling units.
- **Licensed Trades Required:** All installations should be completed by qualified professionals.

## Optional Upgrades

- **Kitchen Cabinet Sets:** Includes sink and appliances for functional living or working spaces.
- **Partition Walls:** Create separate rooms for flexibility and privacy.
- **Custom Storage:** Built-in wardrobes or storage units to maximise space.
- **Cladding & Finish Options:** Upgrade interior or exterior finishes for a personalised look.

## Warranty & After-Sales Support

- **3-Year Coverage:** Protects external structure and weatherproofing.
- **1-Year Coverage:** Covers internal fittings and fixtures.
- **Returns Policy:** Returns are not accepted once production has started.
- **After-Sales Support:** Full support provided for any manufacturing defects.